

METODI E MODELLI PER LA IDROBIOGEOFISICA

Enzo Rizzo

Ricercatore del CNR-IMAA

rizzo@imaa.cnr.it

Laboratorio di Geofisica

C.da S.Loja, Z.I. Tito Scalo (PZ)

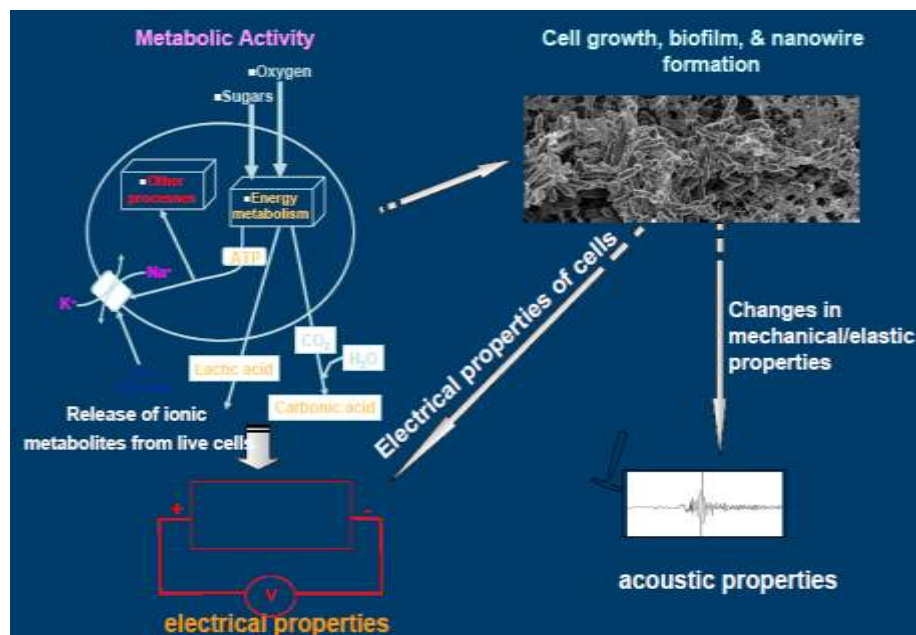
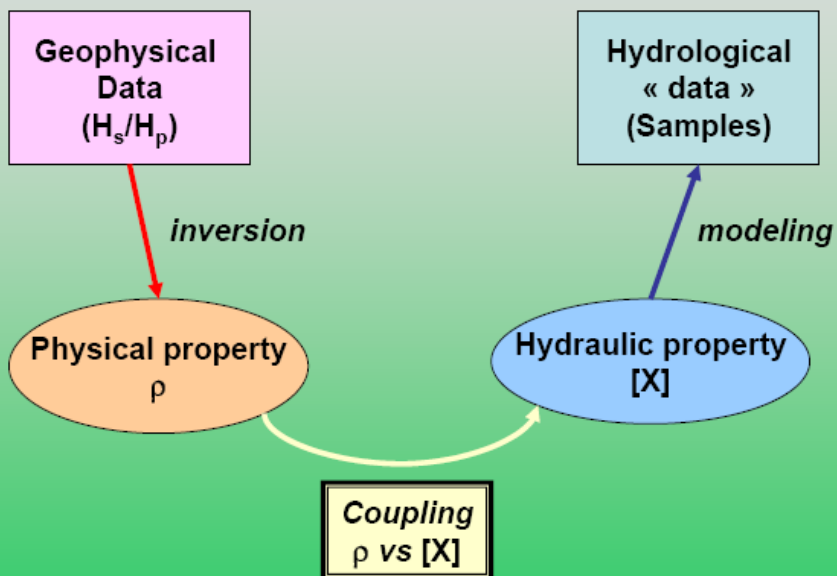
Laboratorio Hydrogeosite

C.da Fontanelle, Marsico Nuovo (PZ)

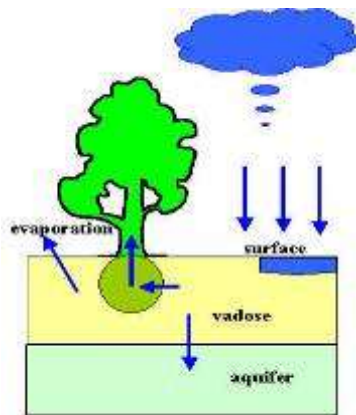


Challenge scientifico

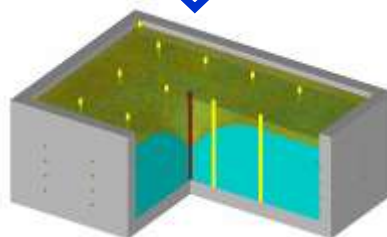
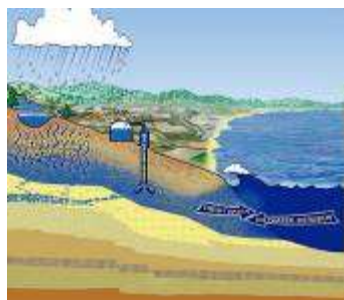
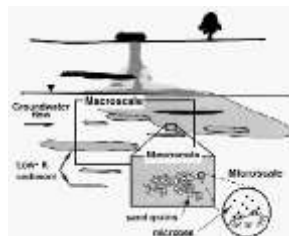
Sviluppo di sistemi osservativi e modelli quantitativi per lo studio di processi connessi alla IdroBioGeofisica

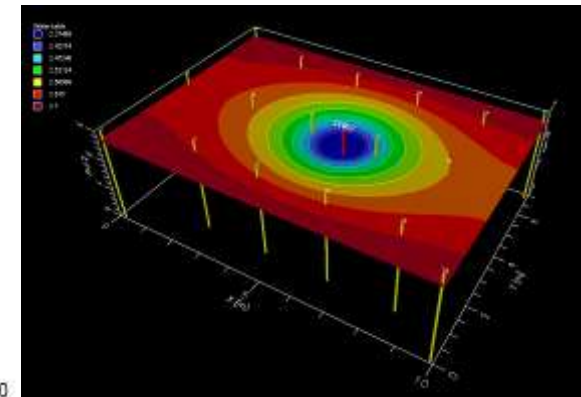
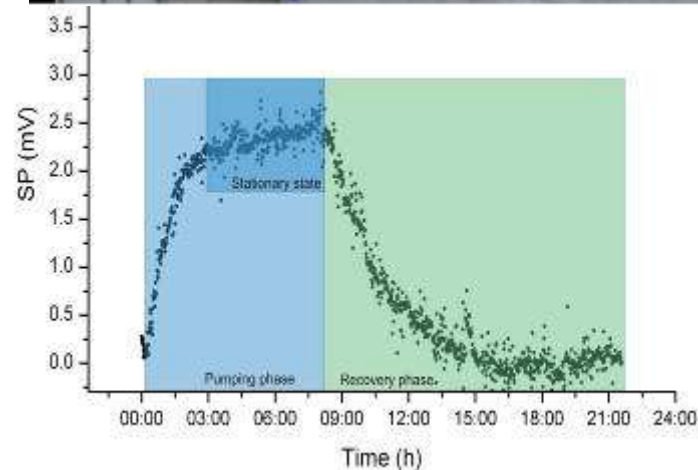
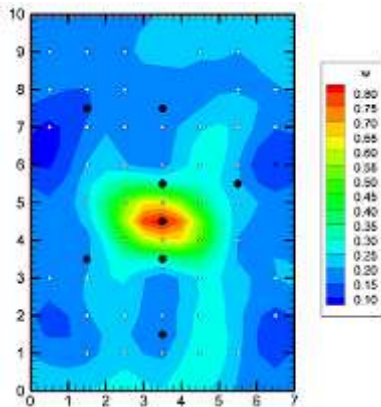
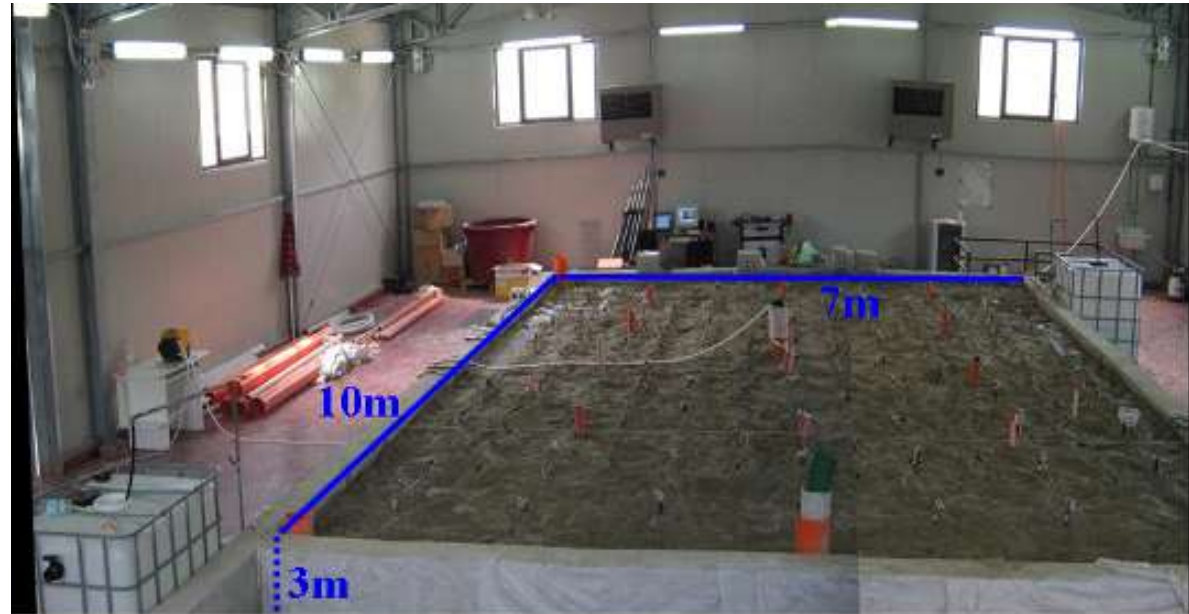
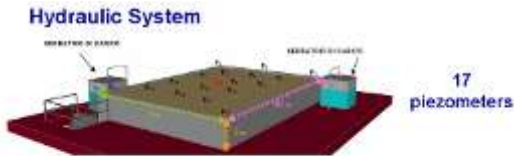


Applicazioni innovative nello studio del suolo e sottosuolo



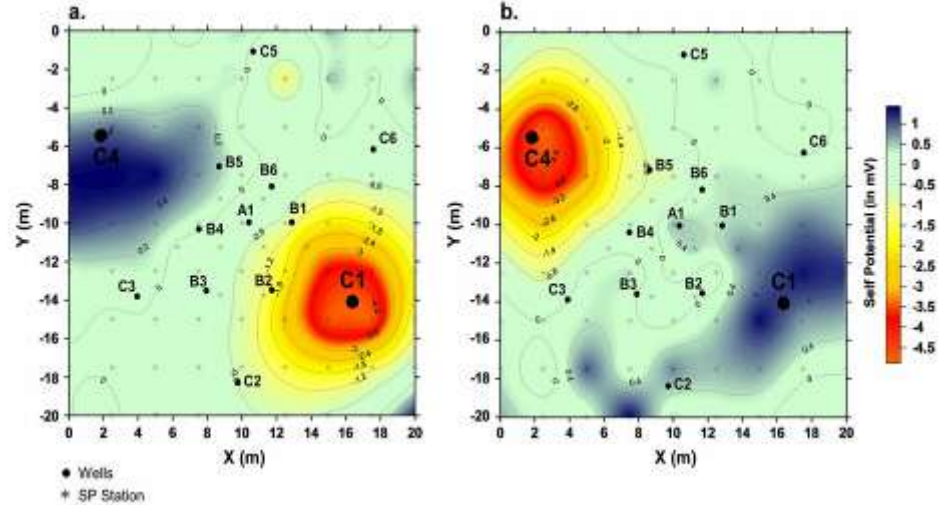
*Water flow regime in the system
atmosphere-plant-soil*





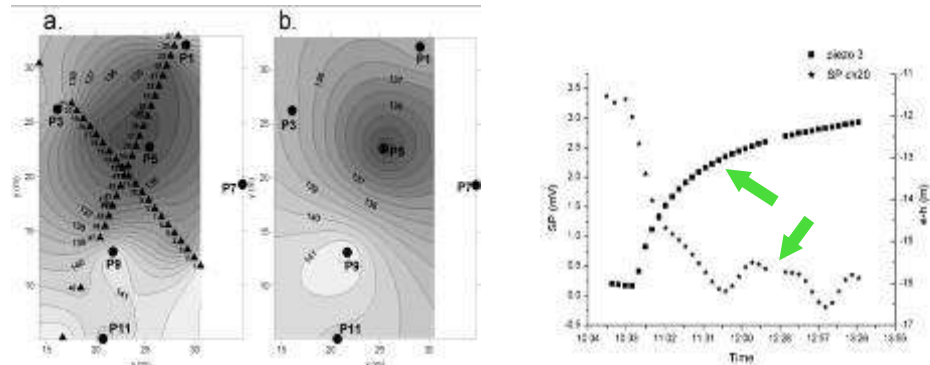
Straface, S., **E. Rizzo**, and F. Chidichimo (2010), Estimation of hydraulic conductivity and water table map in a large-scale laboratory model by means of the self-potential method, **Journal of Geophysical Research**, 115, B06105, doi:10.1029/2009JB007053

Test Site – BHRs- Boise-USA



A. Jardani, A. Revil, W. Barrash, A. Crespy, **E. Rizzo**, S. Straface, M. Cardiff, B. Malama, C. Miller, and T. Johnson (2009). Reconstruction of the water table from self-potential data: A Bayesian approach. **Ground Water**, vol.47, No.2, 213-227

Test Site – Università della Calabria



S. Straface, C. Fallico, S. Troisi, **E. Rizzo** and A. Revil (2007). Estimating of the transmissivities of a real aquifer using a Self Potential signals associated with a pumping test. **Ground Water**, 2007, Vol. 45, n. 4, pp. 420-428



PROGETTI DI RICERCA

SEVENTH FRAMEWORK PROGRAMME FP7: Environmental Technologies ModelPROBE PARTNERS

- Helmholtz Centre for Environmental Research UFZ Germany
- University of Padua UPD Italy
- **CNR IMAA & IRSA**
- Battelle Memorial Institute, European Section (Geneva, CH) BMI Switzerland
- Technical University of Denmark DTU Denmark
- Earth Tech CZ Ltd. ETC Czech Republic
- University of Lancaster ULanc UK
- University of Aarhus, National Environmental Research Institute AU-NERI Denmark
- Université Catholique de Louvain UCL Belgium
- University of Rome URom Italy
- Saint-Petersburg State University USP (SpbSU) Russia
- CREATEC, Potenza CREATEC Italy
- Christian Albrechts University of Kiel CAU Germany
- University of Bonn UBO Germany
- DELTARES (GeoDELFT) DLS The Netherlands
- MPBF Mess- und Probenahmetechnik Berndsen und Faiß GbR MPBF Germany
- Institut de Physique du Globe de Paris IPGP France



CNR Environment and Health Inter-departmental Project: present knowledge and prospects for future research

